

Indoor vent less fireplace burner based on evaporated ethanol combustion technology

*Designed, manufactured, and tested according to DIN 4734-1 standard
Compliant with EN 16647 norm*

Model: Line Burner L

Materials :

Stainless Steel (quality 1.4301)

Ceramic fibres evaporator

Fuel: Bioethanol 96% v/v

Features:

Process control - start/ignition/stop by the folding mechanism.

Handle for operating folding mechanism and lighter enclosed.

Fuel may not be stored in a fuel tank permanently.

Tank size - 2,50 l

Burning time - up to 6 h *

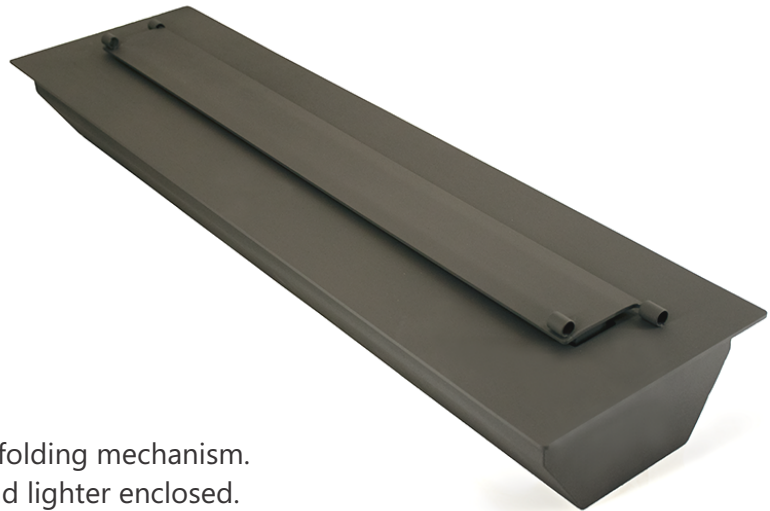
Fuel consumption - approximately 0,40 l/hour *

Thermal output - up to 3 Kw *

Required room volume - 70 m³ *

Weight - 14 kg

Weight with full tank - Up to 16 kg



* The efficiency data has approximate value depending on the weather conditions,
installation point and bioethanol used

Dimensions:

